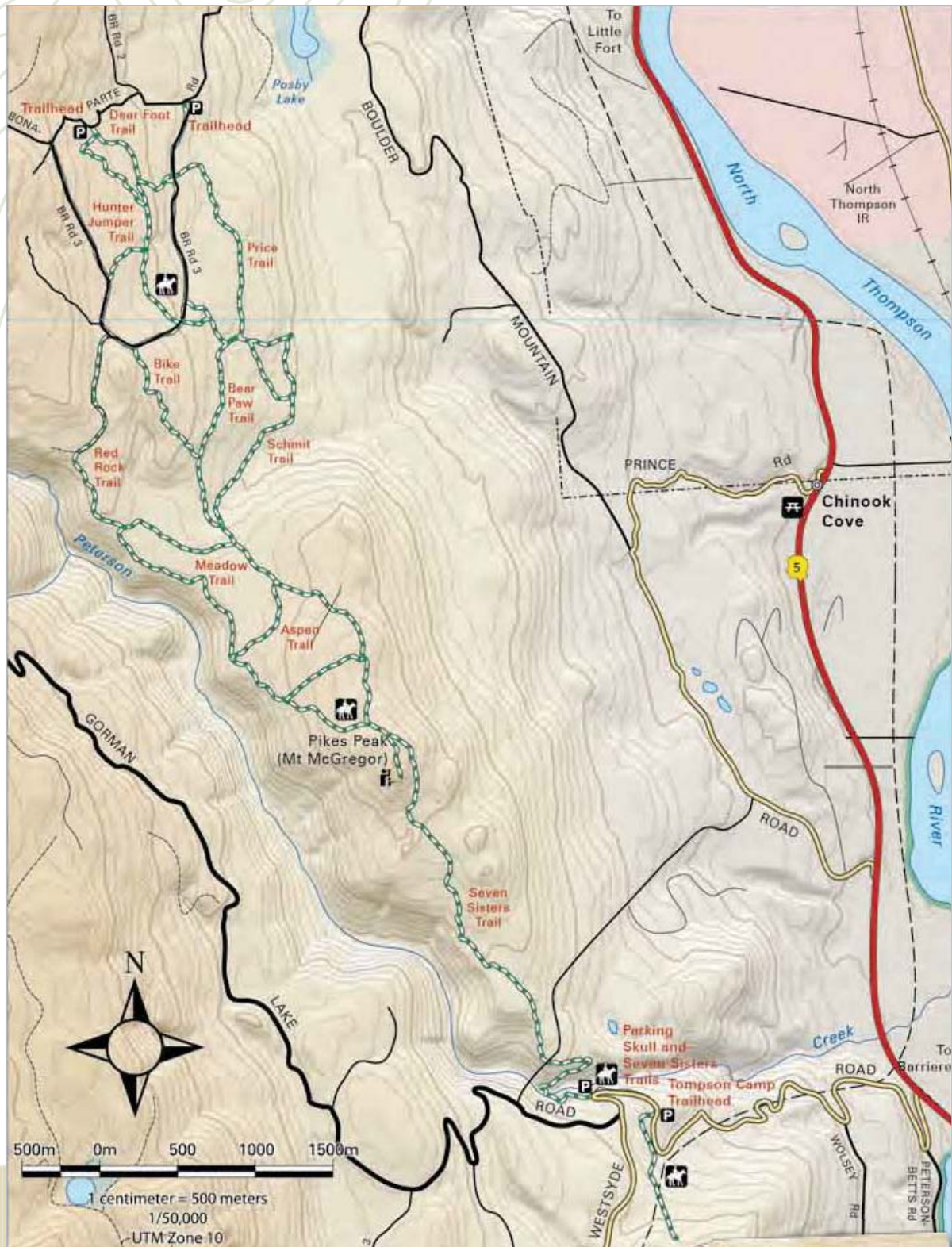


SEVEN SISTERS

TRAIL

BACKROADMAPBOOKS.COM



LENGTH: 19.3 KM
GPS: N-51.19247N
W-120.18447
TIME: 5-6 HOURS

SEASON: APRIL-OCTOBER
DIFFICULTY: MODERATE

SEVEN SISTERS



AREA DESCRIPTION

There is a panoramic view of Barriere and the North Thompson River from Pikes Peak (the local name for Mt. McGregor). This area offers examples of antler markings on aspen trees, old growth forests, landscapes affected by the wildfires of 2003, and wildflowers.

ACCESS

- Travel north from Barriere on Highway 5 across the bridge on the North Thompson River. Turn west on Westsyde Road 0.5 km north of the bridge and travel up several switchbacks to km 4 where there is a pull-over spot on the switchback. There is also a parking area at Km 3 and 5 which allow a little more room.
- From km 4 travel the dirt path north to Peterson Creek. Cross and travel north to Pikes Peak (Mt. McGregor).
- Ride to Pikes Peak and backtrack or continue on where you will find three loop trails allowing for longer or shorter rides through the aspen forest.

